
TPEG for Cycling

NAPCORE Mobility Data Days

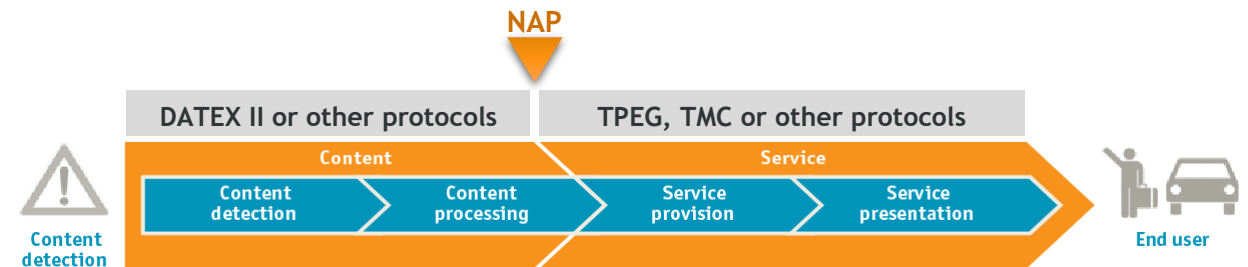
Matthias Unbehaun
TISA Executive Director
Nov 2023, Budapest



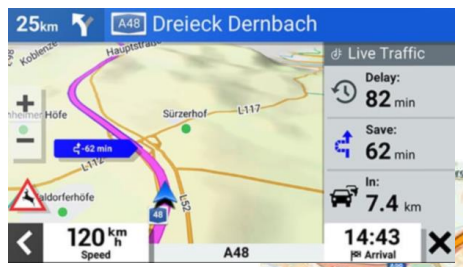
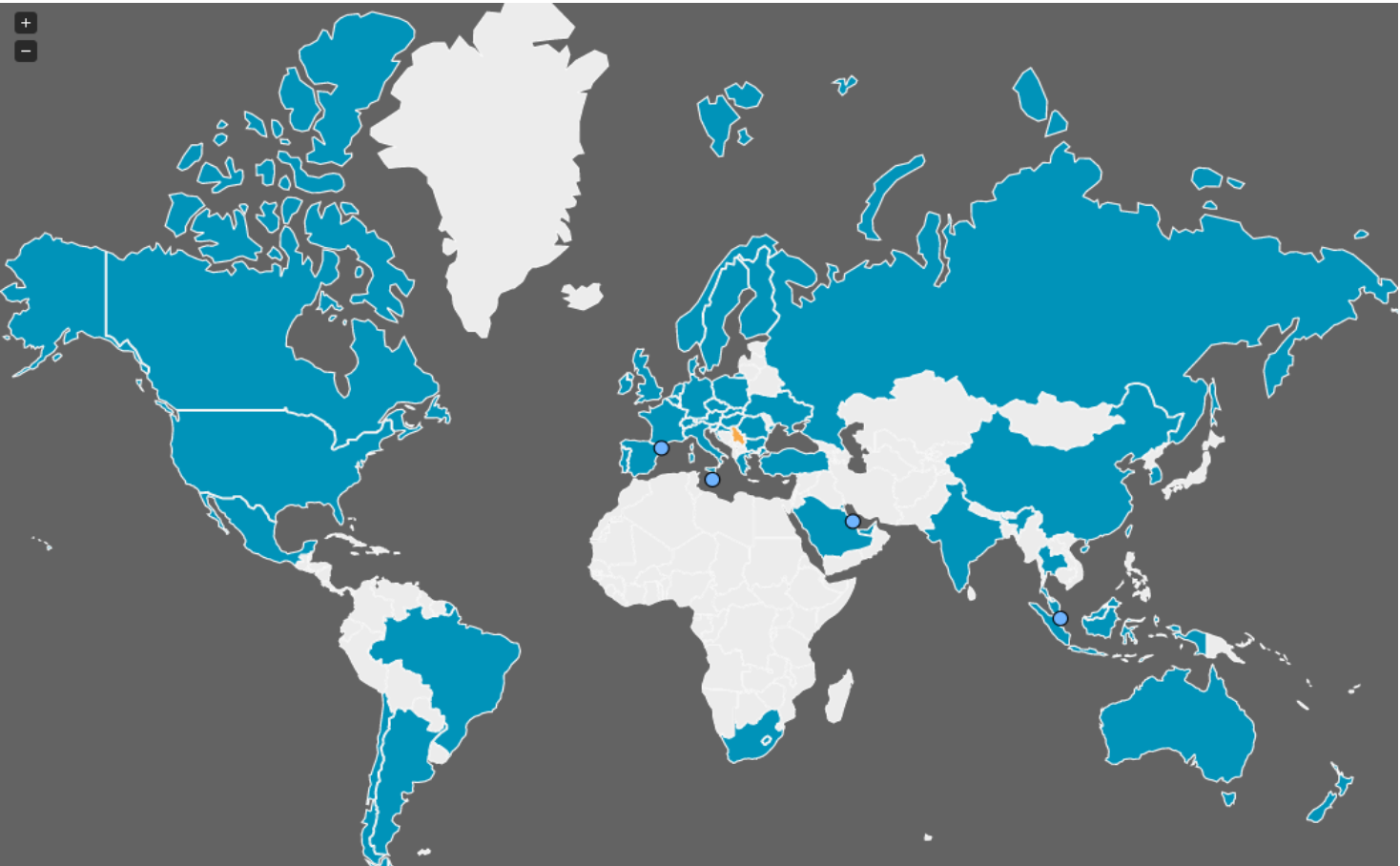
TPEG2 – a toolbox

TPEG2 is a set of international standards for the provisioning of **real-time** traffic and traveller information services to end users.

- Traffic Event Compact (TEC)
 - Traffic Flow Prediction (TFP)
 - Weather Information (WEA)
 - Parking Information (PKI)
 - Fuel Price Information (FPI)
 - Road and Multimodal Routes (RMR)
 - Emergency Alerts and Warnings (EAW)
 - Electromobility Information (EMI)
- ... plus some more applications and housekeeping protocols

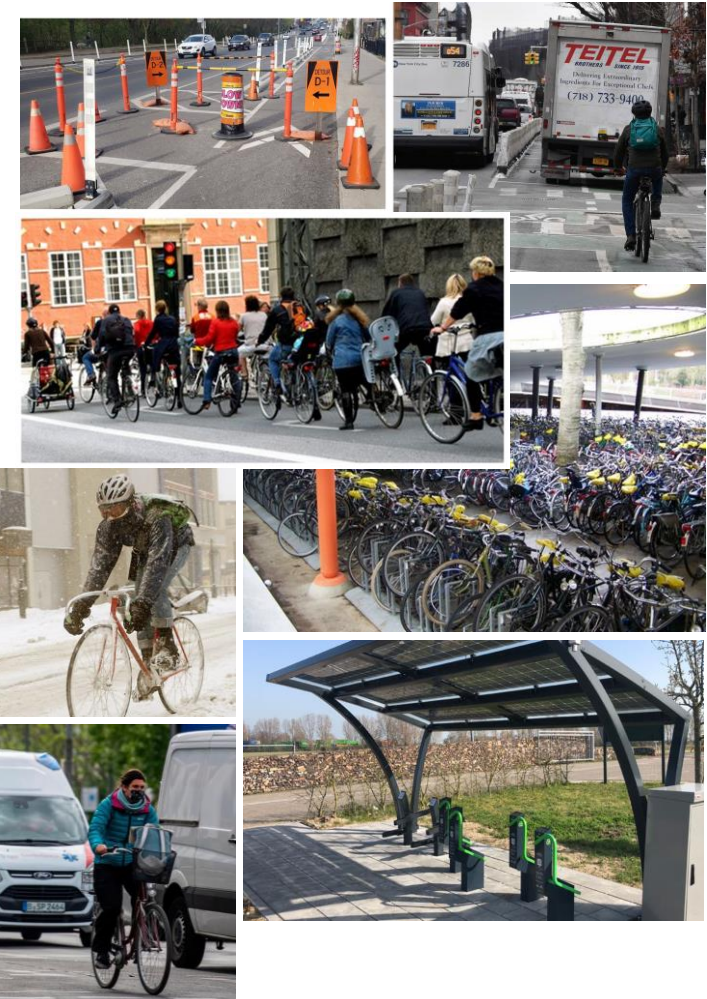


TPEG Coverage worldwide (2023)



Some ideas how to use TPEG Technology for informing Cyclists




- Traffic Event → bicycle path closures (planned) and blockages (unplanned)
- Traffic Flow Prediction → bicycle traffic congestions
- Bike Parking Information → major problem in some cities like Amsterdam or Copenhagen
- Weather Information → surely affects bike riders' decisions on mode of transportation
- Emergency Alerts and Warnings → does of course also affect bicyclists
- E-bike Charging Information → “Electric bicycle sales are growing 16x faster than general cycling.”
(source: electrek.co)



DATEX II & TPEG2 could have a head-start ...

- DATEX II and TPEG2 work 'hand-in-hand', Road Operators and Service Providers know how to use it
- TISA can, based on the renovated TPEG2 Protobuf with AMQP/MQTT quickly turn around a TPEG-4-Cycling protocol suite

... but there are some Challenges

- sufficiently accurate maps for bike paths and bike lanes 
- location referencing (bicycles ≠ cars) 
- useful & non-distracting user interface for cyclists 

Who is in the lead?

What is the underlying business case?





 www.linkedin.com/company/tisa-traveller-information-services-association/

 info@tisa.org

 www.tisa.org