



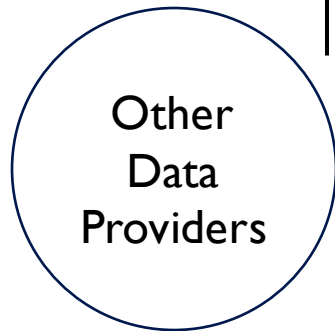
NAPCORE

Cyprus National Access Point - LoS

8th November 2023

The Cyprus National Access Point

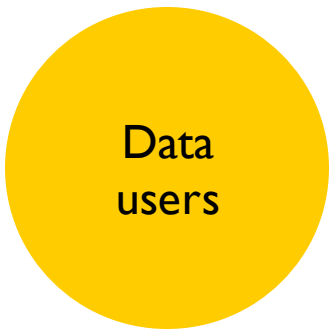
Metadata repository | traffic4cyprus.org.cy

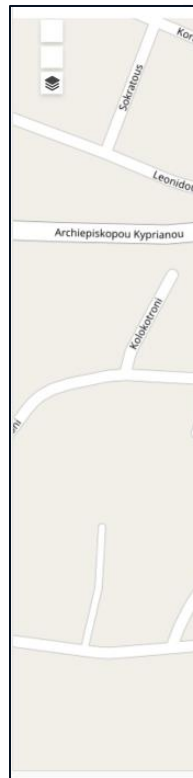


CYNAP



Using:





Δεδομένα Δημόσιων Μεταφορών σε Πραγματικό Χρόνο (Real-Time Passenger Information)

Dataset Groups

Manage

Followers
0

Follow

Organization



Public Works Department

The mission of the department is the allocation of available resources and means for the continuous provision of modern infrastructure projects for urban, suburban, and rural...

read more

Social

Twitter Facebook

License

Creative Commons Attribution

Open Data

Δεδομένα Δημόσιων Μεταφορών σε Πραγματικό Χρόνο (Real-Time Passenger Information)

Complete collection of data for public bus transportation throughout Cyprus. The collection includes:

-General Transit Feed Specification (GTFS) files for all providers and routes across the island, regularly updated and as needed. -Real-time bus telemetry data service - Service interface for Real-Time Information (SIRI). -Bus Stop Catalog in CSV format. -Routes in vector format (SHP).

Important Notes: -The publication of this dataset replaces the 5 datasets related to Public Transportation in the districts of Nicosia, Limassol, Larnaca, Paphos, and Famagusta, as well as those concerning the small buses of Nicosia Municipality and intercity buses. -Data regarding both bus stops and routes are reviewed at regular intervals, and therefore, modifications may exist that are not reflected in the data for a certain period. Every effort is made to ensure that the information and data uploaded are up-to-date and error-free. However, we cannot guarantee the accuracy of all the information and data posted. When errors are identified, efforts are made to correct them.

Data and Resources

SIRI Web Service (Τηλεμετρική)

Structured Real-Time Information about public transport services in Cyprus

Explore

SIRI Web Service (Τηλεμετρική)

Structured Real-Time Information about public transport services in Cyprus

Explore

Διαδρομές - Routes (shp)

Bus routes

Explore

EMEL GTFS LPT MMTIS NPT OSEA OSYPA SHP SIRI bus EMEA ΟΣΥΠΙΑ

δημόσιες μεταφορές λεωφορεία

Additional Info

Field	Value
Source	http://www.motionbuscard.org.cy/pendata
Author	Aristotelis Savva
Maintainer	Aristotelis Savva
State	active
Last Updated	October 6, 2023, 12:39 (UTC)
Created	October 6, 2023, 11:43 (UTC)



Data (metadata) collection



Services for data discovery and download



Visualise data related to the traffic conditions



Current Access Status And Conditions
The CyNAP offers a variety of real time data such as traffic congestion levels, vehicle speeds, public transport live feed etc.



Regulations And Restrictions
The CyNAP accommodates data related to regulations and restrictions (e.g. weight / length / width / height / speed restrictions, etc)



Infrastructure
The CyNAP gives access to infrastructure data such as road network topology, recharging and refuelling points and stations.

Data in the CYNAP

CYNAP



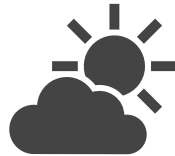
Satellite data (GNSS/GPS)

Floating Car Data (FCD) /
Telematics



CCTV Data

CCTV for road monitoring



Environmental Data

Data related to weather conditions and air
quality



Sensor data

Loop detectors and Bluetooth
sensors



Surveys

Data from Sustainable Urban Mobility
Plans



Third party data

Data from WAZE and other sources



**Data
(metadata)
collection**



**Services for
data discovery
and download**



**Visualise data
related to the
traffic
conditions**

The Cyprus National Access Point LoS



Next Steps: Improve LoS

CYNAP

Stage 1

Focus on prioritizing feature categories with low score

Stage 2

Identify areas to improve LoS of feature categories

Stage 3

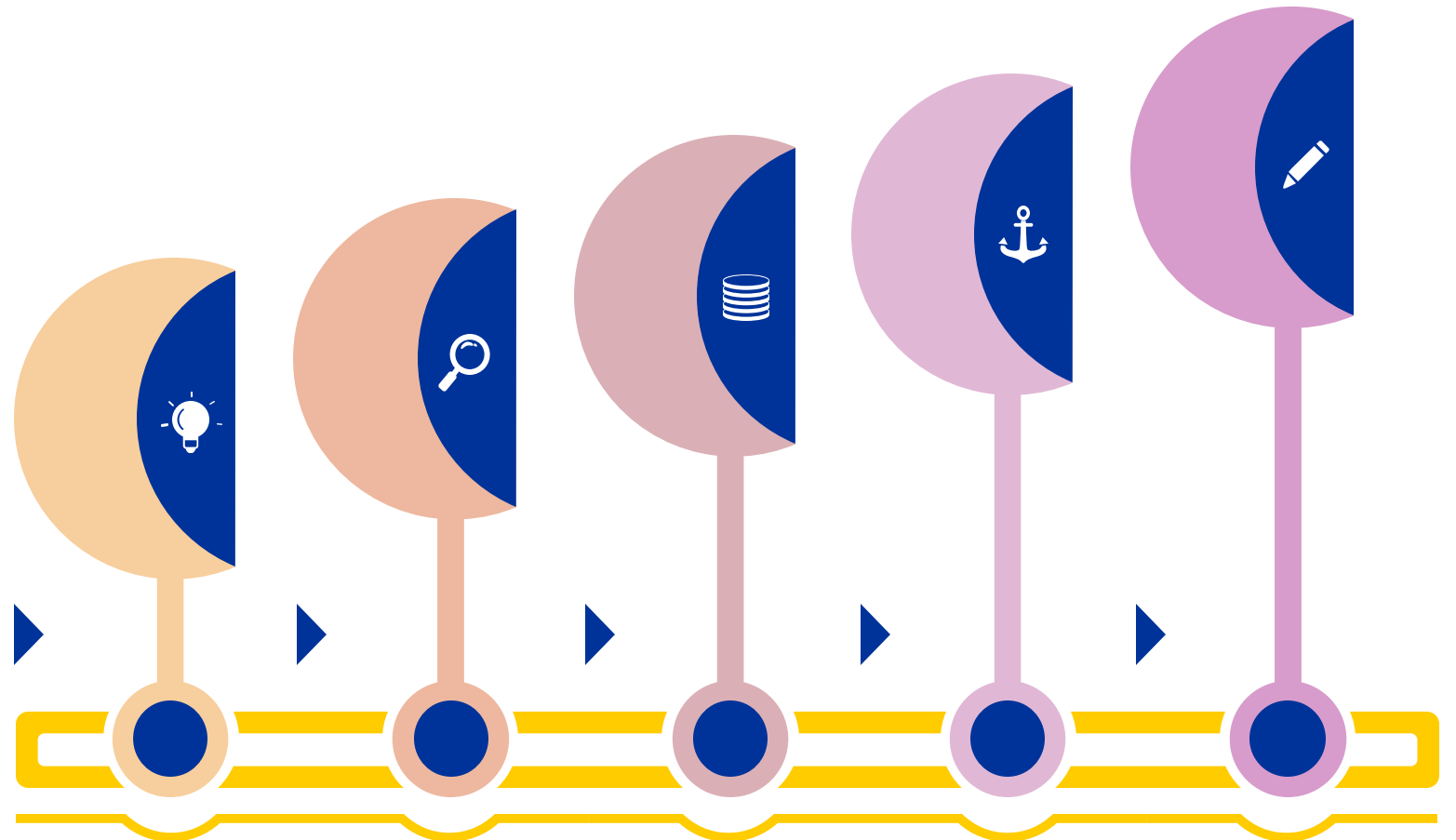
Create a plan to improve the LoS

Stage 4

Implement changes on CY NAP

Stage 5

Use the LoS tool to re-assess the CYNAP LoS



Thank you for your attention

George Christou

christou.george@ucy.ac.cy